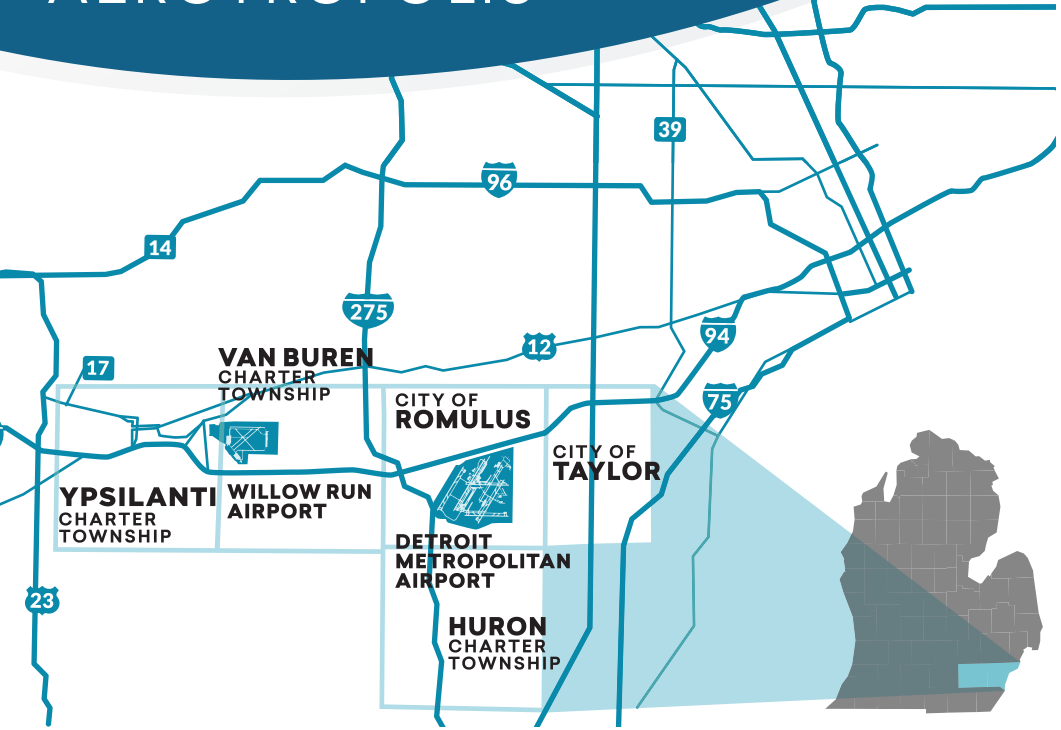




# DETROIT REGION AEROTROPOLIS®



**6,000** AVAILABLE ACRES    **5** RAIL LINES    **3** FREEWAYS    **2** AIRPORTS

The Detroit Region Aerotropolis Development Corporation is a five-community, two-county public-private partnership with the Wayne County Airport Authority driving corporate expansion and new investment around Detroit Metropolitan and Willow Run Airports.

### SERVICES

- » Site identification & infrastructure analysis
- » Regional market data & demographic information
- » Intergovernmental relations
- » Private sector engagement
- » Incentive approvals & public infrastructure funding

## CONTACT US



**Rob Luce**  
EXECUTIVE DIRECTOR



**Marco Salomone**  
DIRECTOR OF BUSINESS DEVELOPMENT

DetroitAero.org

Romulus, MI

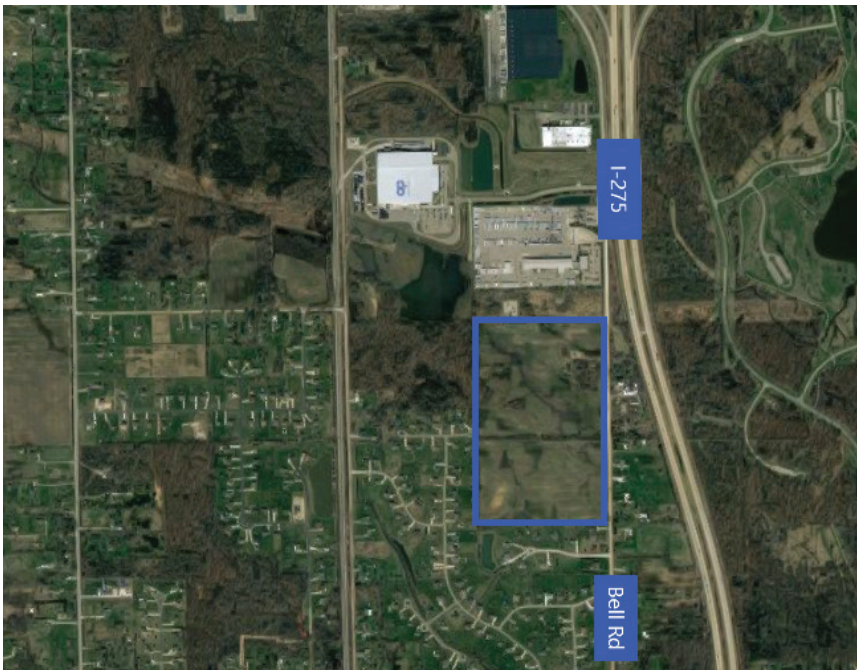
734.992.2286

@DetroitAero

Detroit-Region-Aerotropolis

NAME

AERO-39



**COMMUNITY**  
Huron Township

**ACREAGE**  
60.62

**PRICE**  
\$21,445 per acre

**ZONING**  
Agricultural

**ELECTRIC**  
Please call for more information

**WATER**  
Please call for more information

**SEWER**  
Please call for more information

**STORM**  
Please call for more information

**WETLAND**  
No

**FLOODPLAIN**  
No

**RAIL**  
No

**CLEARED**  
Yes

**NOTES**