

# WHERE AMERICA'S GLOBAL SUPPLY CHAIN WORKS



## DETROIT REGION AEROTROPOLIS®

The Detroit Region Aerotropolis is a public-private partnership working closely with local, county, and state level leaders to ensure proper policies and resources are available to support your project.



WORKFORCE OF 3 MILLION  
WITHIN THE AEROTROPOLIS  
LABOR MARKET



17 HIGHER EDUCATION  
INSTITUTIONS  
WITHIN 50 MILES



13 FORTUNE 500 COMPANIES  
WITHIN 25 MILES



60,000 ACRES OF LAND  
AVAILABLE IN OUR  
SEVEN-COMMUNITY REGION

### KEY INDUSTRIES



#### TRANSPORTATION, DISTRIBUTION, & LOGISTICS

Coca-Cola, FedEx, UPS, Delta Airlines, Spirit Airlines

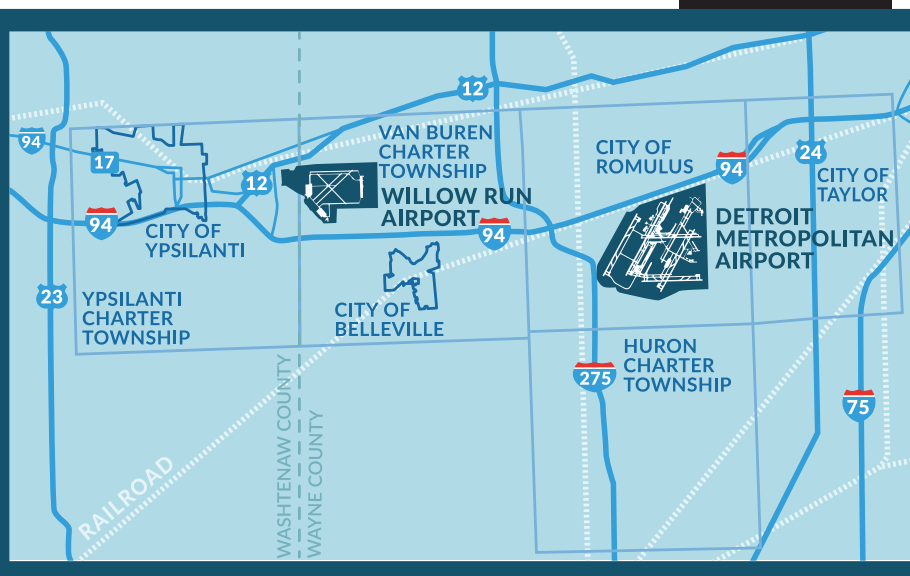
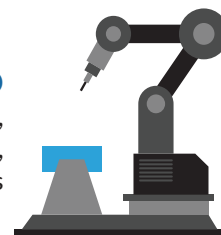


#### MANUFACTURING

Ford, General Motors, Lear

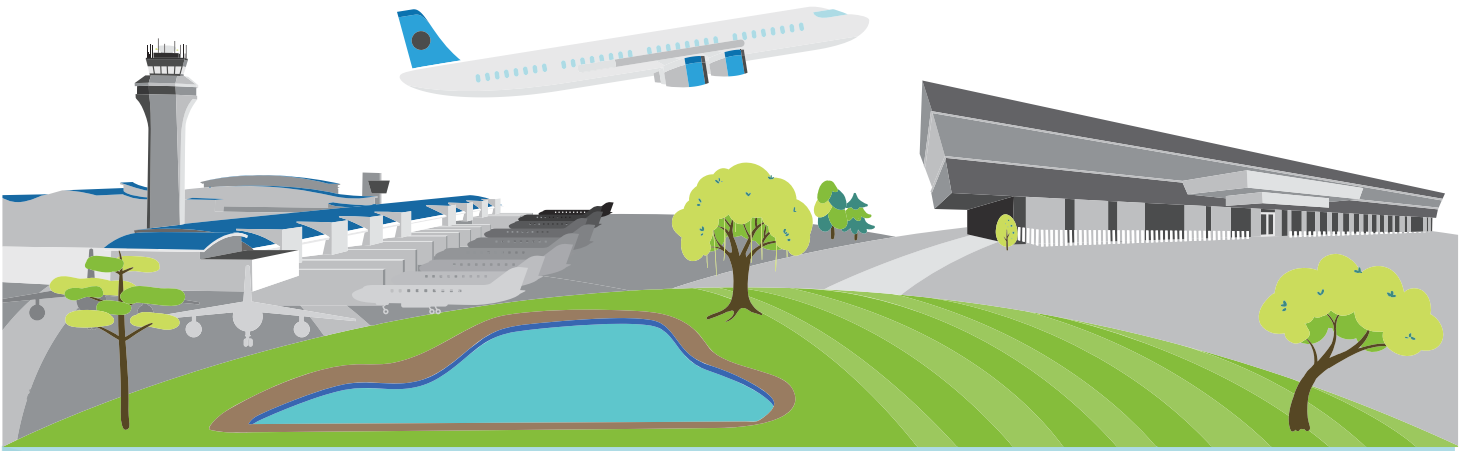
#### R&D

American Center for Mobility,  
GE R&D and engineering,  
Visteon headquarters



### LOCATION

- » 25 minutes from the Port of Detroit
- » 25 minutes from the Port of Monroe
- » 25 minutes from Downtown Detroit
- » 45 minutes from Toledo, OH
- » 65 minutes from Lansing, MI
- » 20 minutes from Ambassador International Bridge Border Crossing & Detroit-Windsor Tunnel



## DETROIT METRO AIRPORT

- » Domestic & International commercial and freight hub
- » 33M passengers in 2015
- » 426M lbs of cargo in 2015
- » 13 airlines provide more than 1,100 daily flights to 4 continents

## WILLOW RUN AIRPORT

- » 200M lbs of cargo per year
- » 5 cargo carriers
- » Leading airport for landed air-freight flown by exclusive cargo aircraft
- » Future home of the American Center of Mobility



## PORTS, RAILS, & ROADS

- » Port of Detroit is the 3rd largest international gateway in the U.S.

- » Two major interstate highways, I-94 and I-275, intersect in the Aerotropolis Region.
- » Norfolk-Southern, CSX and CN rail lines with available spurs

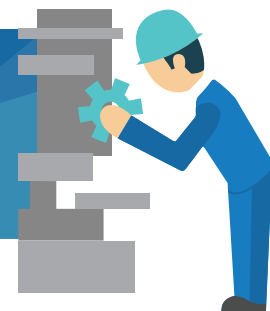


## LIVE, WORK, PLAY IN THE AEROTROPOLIS

- » Ann Arbor & University of Michigan, 20 minutes West
- » Detroit, 20 minutes East
- » Extended technology & engineering pool
- » Cultural, sporting, & community events



# AS A NEXT MICHIGAN DEVELOPMENT CORPORATION, THE DETROIT REGION AEROTROPOLIS OFFERS THE FOLLOWING INCENTIVES TO ELIGIBLE NEW AND EXPANDING BUSINESSES.



## LOCAL DEVELOPMENT FINANCE AUTHORITY

PA 281 of 1986

Allows the Detroit Region Aerotropolis to utilize tax increment financing to fund public infrastructure improvements. There are several financing options for LDFA activities that allows for the capture of incremental growth of local property taxes over a period of time to fund these improvements.



## INDUSTRIAL FACILITIES TAX EXEMPTION

Act 198 of 1974

An Industrial Facilities Exemption certificate can be used to obtain a 50% property tax reduction for new, qualified real and personal property for a period of up to 12 years.



## LEASING & CONSTRUCTION

MANUFACTURING	SURVEY
Rent Per SF	\$4.62
Vacancy Rate	1.70%
Vacant SF	329,700
Available SF	1,535,211
Existing Buildings	396
Existing SF	19,064,552
Sales Price Per SF	\$32
Asking Price Per SF	\$51 (\$43 5 year average)

WAREHOUSE	SURVEY
Rent Per SF	\$4.25
Vacancy Rate	3.70%
Vacant SF	300,530
Available SF	957,078
Existing Buildings	222
Existing SF	8,130,910
Sale Price Per SF	\$27
Asking Price Per SF	\$56

DISTRIBUTION	SURVEY
Rent Per SF	\$5.01
Vacancy Rate	0.30%
Vacant SF	8,120
Available SF	423,098
Existing Buildings	22
Existing SF	2,813,041
Asking Price Per SF	\$45

HIGH TECH OFFICE	5 YEAR AVERAGE
Gross Rent Per SF	\$19.24
Vacancy Rate	1.70%
Vacant SF	13,801
Available SF	167,174



## CONTACT

**MARCO SALOMONE**  
Director of Business Development  
OFFICE **734.992.2286**  
MOBILE **734.778.3613**  
[Marco.Salomone@DetroitAero.org](mailto:Marco.Salomone@DetroitAero.org)

**DETROIT REGION AEROTROPOLIS**  
11895 S. Wayne Road, Suite 101A  
Romulus, Michigan 48174  
[DetroitAero.org](http://DetroitAero.org)



DETROITAERO



DETROIT-REGION-AEROTROPOLIS